

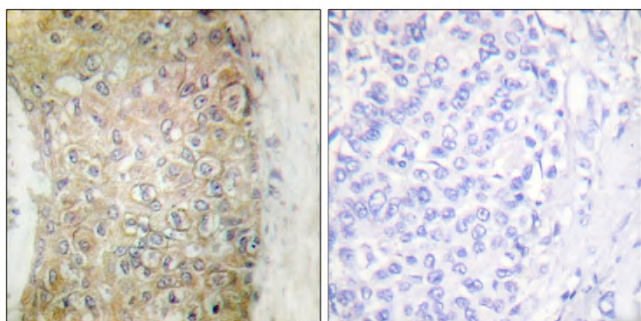


# HSP20 Polyclonal Antibody

<b>Catalog No</b>	YP-Ab-03921
<b>Isotype</b>	IgG
<b>Reactivity</b>	Human;Mouse;Rat
<b>Applications</b>	IHC;IF;ELISA
<b>Gene Name</b>	HSPB6
<b>Protein Name</b>	Heat shock protein beta-6
<b>Immunogen</b>	The antiserum was produced against synthesized peptide derived from human HSP20. AA range:5-54
<b>Specificity</b>	HSP20 Polyclonal Antibody detects endogenous levels of HSP20 protein.
<b>Formulation</b>	Liquid in PBS containing 50% glycerol, 0.5% BSA and 0.02% sodium azide.
<b>Source</b>	Polyclonal, Rabbit,IgG
<b>Purification</b>	The antibody was affinity-purified from rabbit antiserum by affinity-chromatography using epitope-specific immunogen.
<b>Dilution</b>	IHC: 1/100 - 1/300. ELISA: 1/5000.. IF 1:50-200
<b>Concentration</b>	1 mg/ml
<b>Purity</b>	≥90%
<b>Storage Stability</b>	-20°C/1 year
<b>Synonyms</b>	HSPB6; Heat shock protein beta-6; HspB6; Heat shock 20 kDa-like protein p20
<b>Observed Band</b>	
<b>Cell Pathway</b>	Cytoplasm . Nucleus . Secreted . Translocates to nuclear foci during heat shock. .
<b>Tissue Specificity</b>	Muscle,Skeletal muscle,Skin,
<b>Function</b>	PTM:The N-terminus is blocked.,similarity:Belongs to the small heat shock protein (HSP20) family.,subunit:May exist as disulfide-linked dimer and monomer.,
<b>Background</b>	This locus encodes a heat shock protein. The encoded protein likely plays a role in smooth muscle relaxation. [provided by RefSeq, Jan 2012],
<b>matters needing attention</b>	Avoid repeated freezing and thawing!
<b>Usage suggestions</b>	This product can be used in immunological reaction related experiments. For more information, please consult technical personnel.



## Products Images



Immunohistochemistry analysis of paraffin-embedded human breast carcinoma tissue, using HSP20 Antibody. The picture on the right is blocked with the synthesized peptide.